

Empowering UIC's Performance & Achievement Through Teamwork

Joe G.N. "Skip" Garcia MD
Vice Chancellor for Research
Earl M. Bane Professor of Medicine,
Pharmacology & Bioengineering
Vice President for Health Affairs (interim)
University of Illinois

UIC OFFICE OF THE
UNIVERSITY OF ILLINOIS
AT CHICAGO VICE CHANCELLOR
FOR RESEARCH

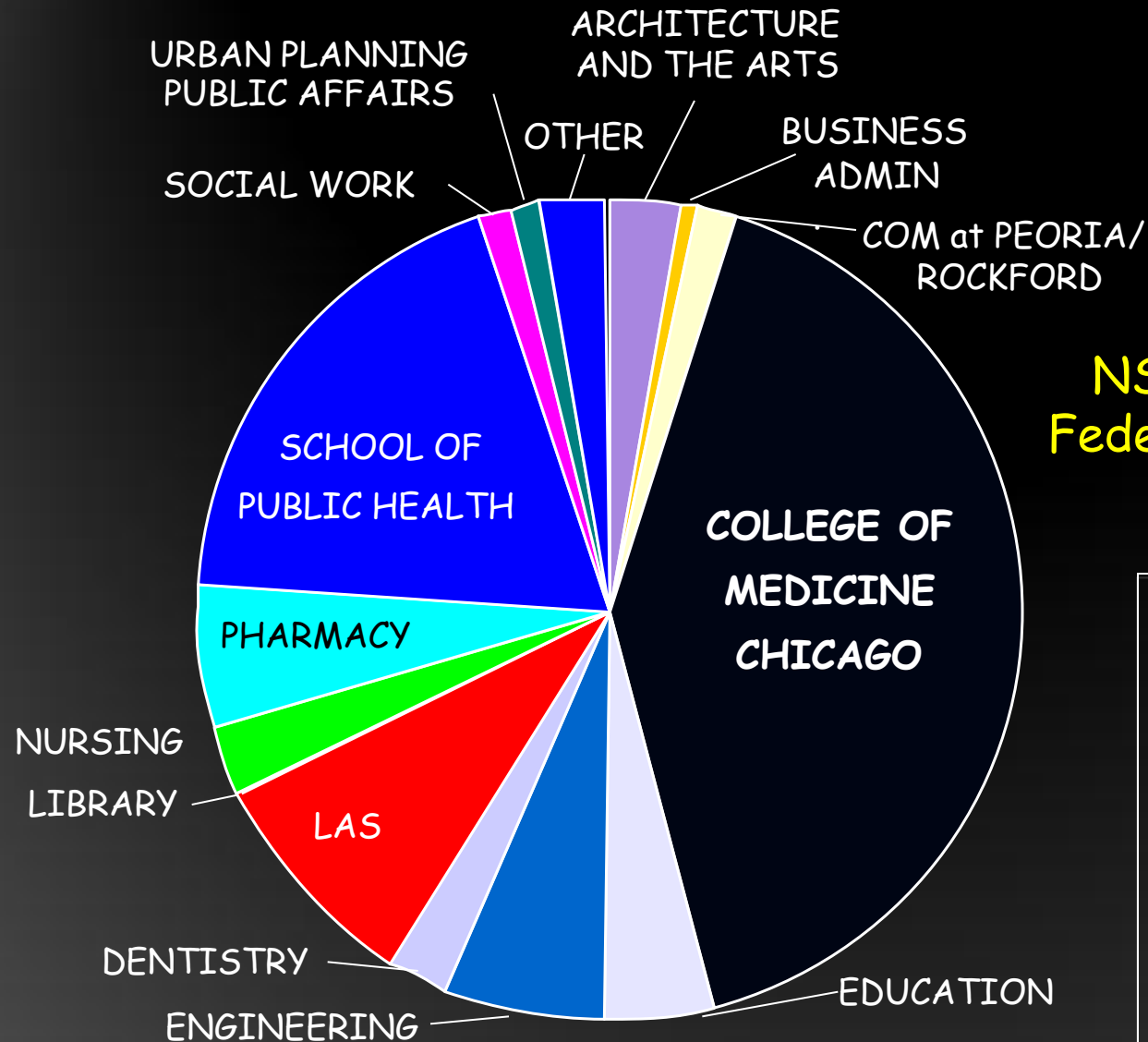
University of Illinois at Chicago
4th Bringing Administrators Together Conference
April 27, 2011

UIC Research Accomplishments

Much Cause for Celebration: National Rankings

- UIC ranked within the top 60 US universities in FY09 (up from 72nd in FY96) (NSF survey, FY09)
- UIC ranked within the top 200 Universities world-wide
- Many UIC departments/programs with national distinction: Humanities, Germanic Studies, Mathematics, English, Pharmacology, Ophthalmology, etc
- Several UIC Colleges which are highly ranked nationally:
 - Applied Health Sciences- #3 out of 68 Colleges
 - Nursing- #6 out of 77 Colleges
 - Pharmacy- #3 out of 65 Colleges
 - Dentistry- #15 out of 47 Colleges
 - Public Health- #16 out of 56 Schools
 - Medicine- #50 out of 150 Colleges

The UIC Research Portfolio: FY10 = \$412M



NSF funding FY10- ~\$22M
Federal funding FY10- ~\$312M

Biomedical Research

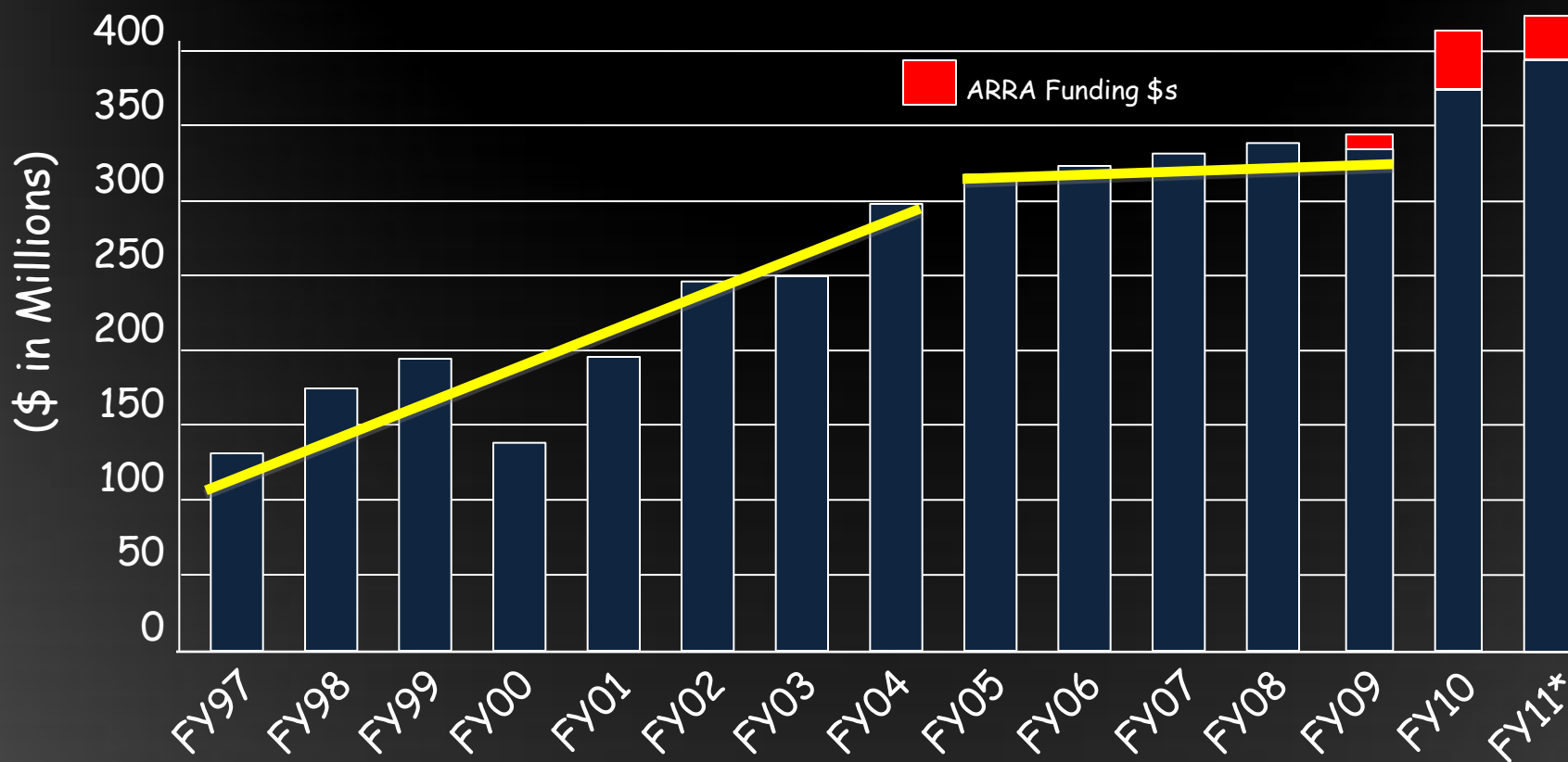
- COM
- SPH
- COP
- CON
- COD

>65% of total research portfolio (~\$270K)

Total Research Funding

The UIC Research Portfolio

Total Research Dollars Awarded (in Millions) FY97-FY11



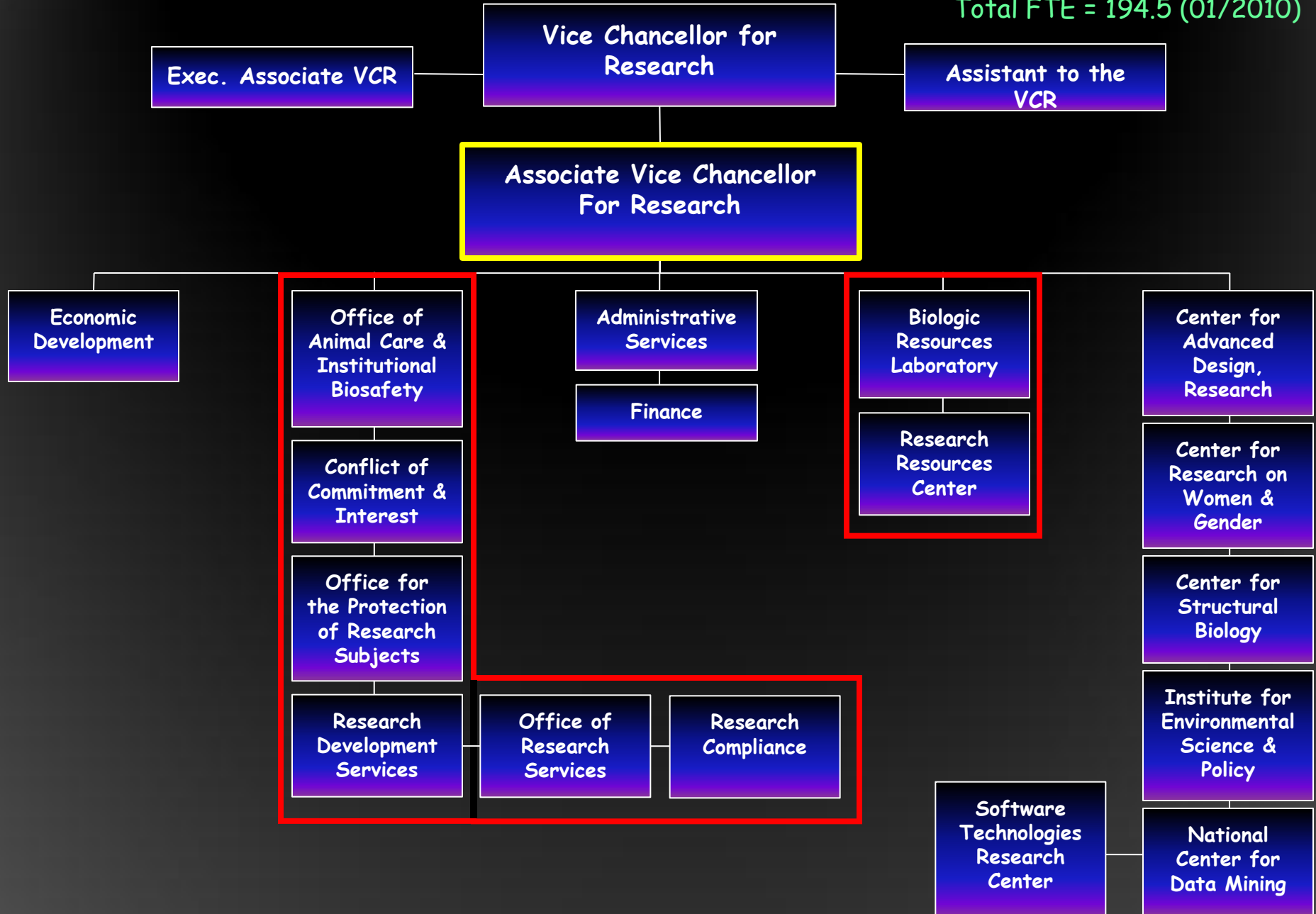
*FY11 data is projected

OVCR Initiatives

- OVCR Organizational Restructuring

OVCR Structure January 2010

Total FTE = 194.5 (01/2010)



OVCR Administrative Structure September 2010

Vice Chancellor for Research
Joe G.N. "Skip" Garcia, M.D.

Total FTE = 183.6 (03/2011)

Associate Vice Chancellor for Research
Mike Jone

Research Strategy & Administrative Support

- Communications
- Finance
- Human Resources
- Post Grad Oversight and Planning
- Administration

16.5 FTE

Human Subjects & Animal Protections

- Office for the Protection of Research Subjects
- Office of Animal Care and Institutional Biosafety

24.5 FTE

Compliance & Integrity

- Academic Integrity
- Conflict of Interest
- Research Compliance

2.6 FTE

Sponsored Research & Development

- Office of Research Services
- Research Development Services

29.0 FTE

Research Support Services

- Biologic Resources Laboratory
- Research Resource Center (including the Center for Structural Biology)
- Chicago Technology Park (ILF)

109.5 FTE

Meet anticipated growth in UIC research portfolio without FTE growth

OVCR Initiatives

- OVCR Organizational Restructuring
- Speed IRB and Contract Processing
- Improve Research Administrative Processes

OPRS IRB Processing

| | | | | | |
|--|----------|-----------|--------|-------|------------|
| OPRS IRB Review | | | | | |
| October 1, 2010 through March 31, 2011 | | | | | |
| | | | | | |
| OPRS | Convened | Expedited | Exempt | Total | |
| # of New IRB Protocol Approvals/Denials | 51 | 211 | 118 | 380 | |
| # of Submissions receiving full approval | 47 | 211 | 118 | 376 | |
| % fully approved | 92.2% | 100.0% | 100.0% | 98.9% | |
| % of Total approved | 12.5% | 56.1% | 31.4% | | |
| | | | | | |
| Fully Approved TAT | Convened | Expedited | Exempt | Total | % of Total |
| 1 to 49 days | 14 | 131 | 113 | 258 | 68.6% |
| 50 to 74 days | 12 | 46 | 0 | 58 | 15.4% |
| 75+ days | 21 | 34 | 5 | 60 | 16.0% |
| | 47 | 211 | 118 | 376 | |
| | | | | | |
| % 75+ days from initial submission | 44.7% | 16.1% | 4.2% | | |
| Mean (days) | 76 | 47 | 18 | | |
| Median (Days) | 72 | 40 | 14 | | |

ORS Contract Processing

| | | | | |
|---|----|------------|-----------|-------------|
| Office of Research Services | | | | |
| Clinical Trial Contract Processing | | | | |
| | | | | |
| October 1, 2010 through March 31, 2011 | | | | |
| # of New Clinical Trial Agreement Submissions | 31 | | | |
| # of CTAs receiving full approval | 35 | | | |
| # of CTAs withdrawn | 8 | | | |
| | | | | |
| Fully Approved TAT | # | % of Total | Mean Days | Median Days |
| 1 to 49 days | 11 | 31.4% | 19 | 19 |
| 50 to 99 days | 7 | 20.0% | 66 | 63 |
| 100+ days | 17 | 48.6% | 176 | 159 |

OVCR Research Administrative Processes

- UIeRA "Sunset"
- Research Administration Business Process Assessment (FY11 Q1-FY12 Q2)
 - ✓ Partnership w/AITS, UIUC, UIS, OBFS, OTM
- Replacement eRA System RFP (FY12 Q3/Q4)
- Replacement System Implementation (FY13 Q1-Q2)
 - ✓ Conflict of Interest
 - ✓ Human Subject & Animal Use Protocols
 - ✓ Grants & Contracts

OVCR Initiatives

- Remodel VCR Office Organization
- Speed IRB and Contract Processing
- Improve Research Administrative Processes
- RRC to Add UIC Biospecimen Bank
- Launched the UIC Institute for Human Genetics (IHG)
- Work with CTSA to Launch Research Data Warehouse
- Implement a mechanism designed to establish UIC as a national "thought leader" in key scientifically-oriented, broadly inclusive research "themes" that will drive recognition of UIC academic research excellence

The UIC Research Mission & Strategic Vision



Advisory Councils of thought-leaders mid and senior faculty - generate white papers to serve as strategic plans for improving the quality and national recognition of that Theme's programs

The UIC Research Mission & Strategic Vision

Urban Resilience and Global Environment

Areas of Excellence Identified

- Monitoring of Civil Infrastructure
- Building Urban Resilience and sustainability (BURST)
- Center for Urban Environmental Sciences
- College of Urban Resources
- Fuel Research Center
- Immigration and the Transformation of the Metropolis
- Nanostructures for Energy and Sustainability

- Power & Energy: Smart Grid
- Public-Private Partnerships in Transportation
- Rail research
- Smart adaptive filters for the environment: Water Contaminants
- Urban Economic Development
- Urban Transportation and Mobility in the Information age



Great Cities Institute



Electronic Visualization Laboratory

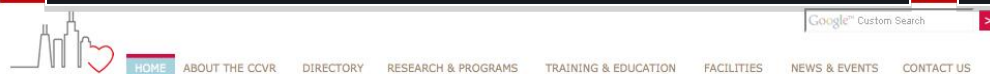
The UIC Research Mission & Strategic Vision

Biomedical Discovery

Areas of Excellence Identified

- Solid Organ Transplantation
- Neurodegenerative Disease
- Colon and Prostate Cancer
- Aging & Longevity
- Obesity & Metabolic Syndrome
- Stroke & Traumatic Brain Injury


- Comparative Effectiveness
- Drug Discovery
- Metabolomics
- Personalized Medicine
- Regenerative Medicine
- Translational Imaging Science



UIC CENTER FOR CARDIOVASCULAR RESEARCH

Thursday, February 3, 2011

Welcome. The Center for Cardiovascular Research is a world-class center of excellence at the University of Illinois at Chicago.



UIC Cancer Center

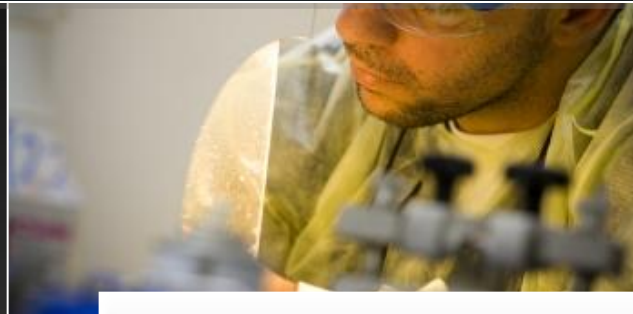
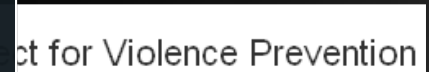


UIC Research Mission: Themes of Excellence

Community Disparities

Areas of Excellence Identified

- Violence
- Access to Health Care
- Mental Health
- Transformative Interdisciplinary Urban Education
- Disciplinary Access for Underserved Communities
- Marginalized people in community





Thank You